

15 March 2010
Company Announcements Office
Australian Securities Exchange

UPDATE OF OPERATIONS AT SAO CHICO, BRAZIL

Plant Shipment

Gold Anomaly Limited ("GOA") reports that its gold processing plant for its high grade gold Sao Chico, Brazil project is ready for shipment to Brazil.

It is expected that the plant will be despatched within the week on its 6 week journey to Brazil and that all necessary importation licences will be obtained before arrival in early May for the planned May production commencement.



Bulk Sampling

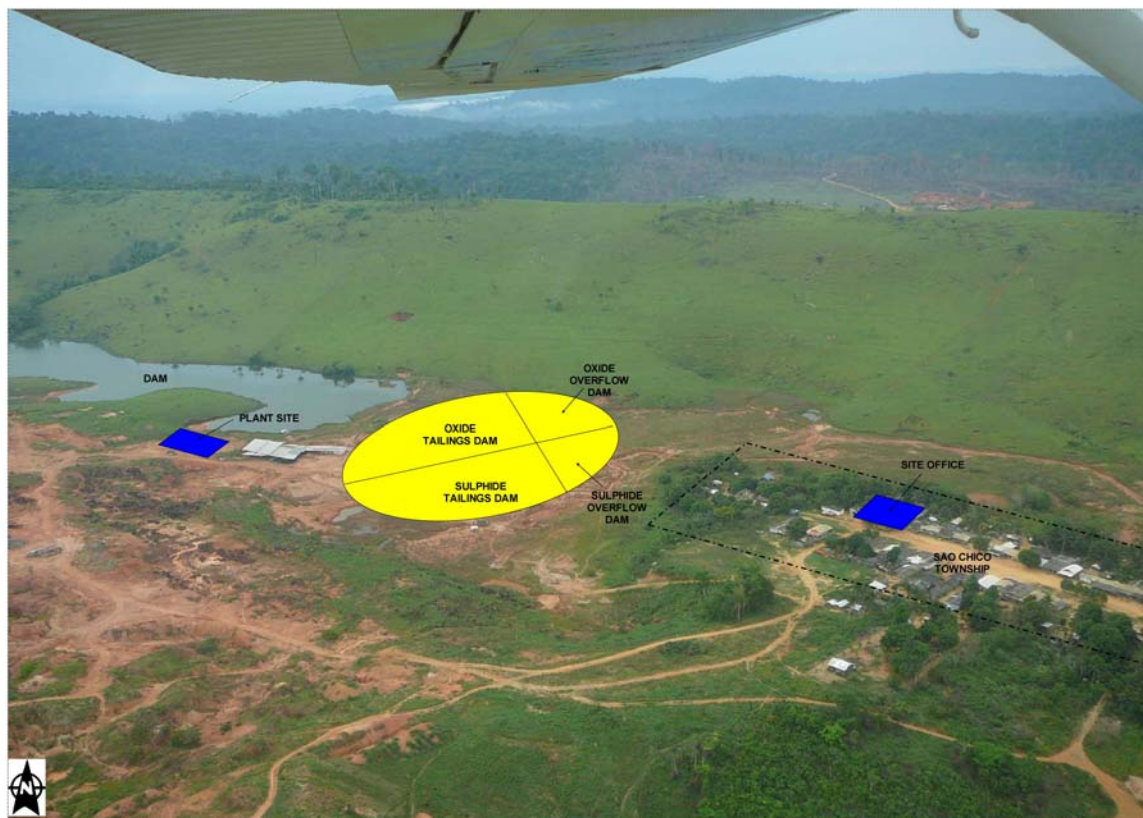
Samples representative of planned plant feed have been collected and are awaiting test work to determine the best preparation criteria (e.g. grain size for optimum gold recovery). Results are expected to be received early April.

GUIA Application and Environmental Licence

The licence under which commencement of small scale gold mining activities can be undertaken at Sao Chico (GUIA Application) has been submitted by the current owner Waldimiro Martins. A site inspection of environmental aspects has also been taken and a report has been submitted. The outcome of these submissions is awaited.

Camp and Office Facilities

Work on refurbishing the Camp and Office facilities continues.



Survey Grid Establishment

Surveyors have been engaged to establish a grid over the property to enable detailed surface mapping to be undertaken. This grid is scheduled for commencement next week and should be completed by month end.

Tailings Dam

Planning for the tailings dam facility is in track for construction to be commenced by month end. Two adjacent Dams are planned, one for oxide material which will be “beached” to increase storage capacity and the other for future sulphide material which will be water covered to prevent oxidation.

Overflow dams will also be constructed to contain tailings in times of heavy rainfall.

About Gold Anomaly

The Company’s immediate focus is commencement of gold mining activities at the high grade gold project at Sao Chico in Brazil and commencement of evaluation of the potentially large Crater Mountain gold project. It is also progressing its Fergusson Island gold project in Papua New Guinea and seeking a joint venture partner for its encouraging vein style polymetallic discovery (zinc-tin-copper silver dominant) at Croydon in north Queensland.

For further information regarding **Gold Anomaly** please contact:

Ken Chapple
Executive Director
Mb +61 (0) 418 758 301

or

Greg Starr
Executive Chairman
Mb +61 (0) 414 906 611

Or visit the GOA website www.goldanomaly.com.au